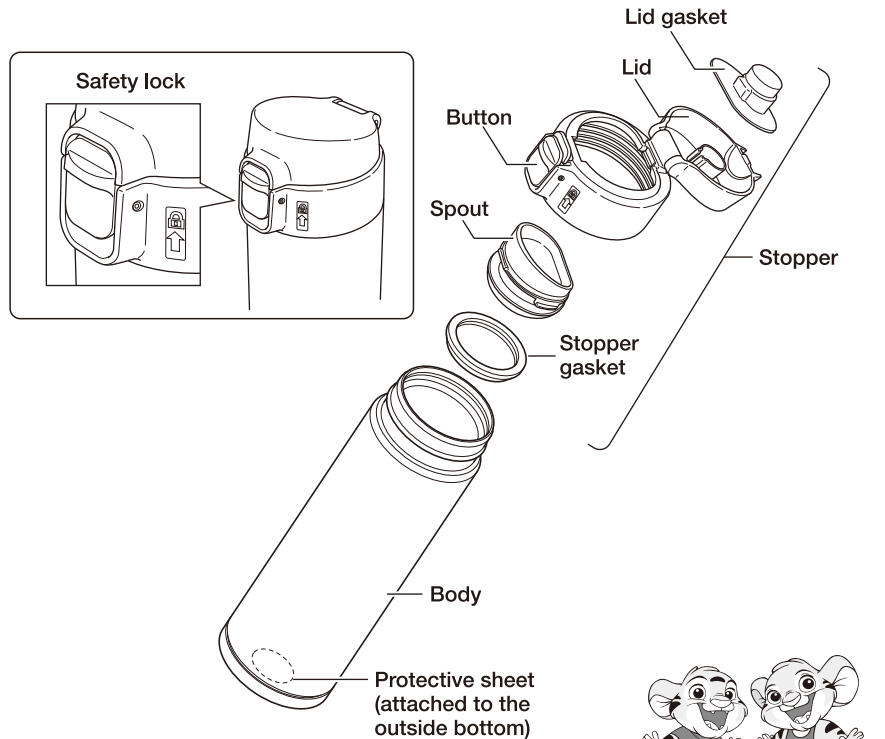


Stainless Steel Mug

Instructions

Thank you for purchasing a "TIGER" Stainless Steel Mug. Please read the instructions completely before use. Keep these instructions for future reference.



Important!

Keep out of reach of children. Do not let children play with the product.

Do not put dry ice or carbonated beverages in the product.

Be sure to set the lid unit in proper position.

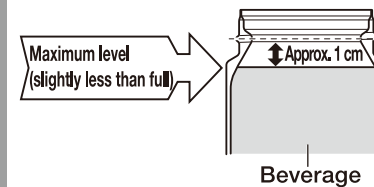
Do not store milk, dairy products, or certain fruit juices in the product.

Do not place the product near stoves, open flames, or other sources of extreme heat.

Do not heat the product in a microwave oven.

Drink slowly when the product contains a hot beverage.

Do not fill the product above the maximum level shown below.



Do not swing the product while holding the strap. (Only for the model with exclusive bag)

Consume beverage within the day to prevent from spoiling.

Noncompliance with these instructions may result in scald or injury.

Do not use the product for any purposes other than keeping beverages warm or cold.

Do not knock over, drop or expose the product to excessive shocks.

Do not disassemble or attempt to repair the product by yourself.

Be sure to clean the product immediately specially after sports drink.

Do not store soups or beverages containing salt in the product.

Be sure carrying bag must be dry. (Only for the model with exclusive bag)

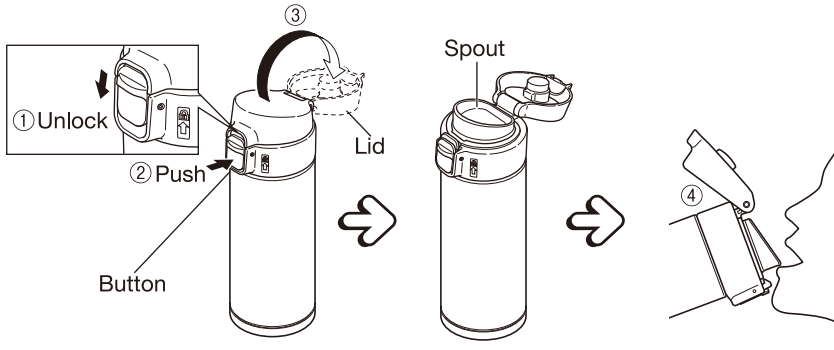
Do not use chlorine-based bleaches or cleaner when cleaning the product.

Do not remove the protective sheet on the underside of the product.

How to Use

To keep your beverage warm or cool longer, pour hot (or cold) water into the body, and let it sit for one or two minutes to allow the inside of the body to heat (or cool).

Slide down the safety lock, push the button to open the lid, and then drink.



After drinking the beverage, keep the main body in an upright position and then close the lid. Slide up the safety lock.

The product rattles when shaken.

This is caused by a metal sheet moving inside the product and it does not affect the performance of the product. The metal sheet is used for boosting the performance of heat retention.

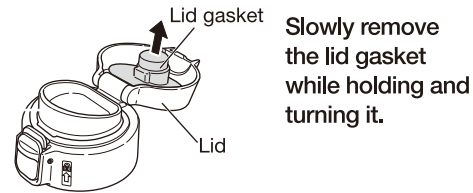
How to Clean

- ◆ Clean after every use.
- ◆ Use mild kitchen detergent.
- ◆ Use a sponge or soft cloth.
- ◆ Be sure to clean the lid and gasket every use.

Caution

- Be sure to wipe off with dry cloth.
- Do not use dish washer, dryer and scalding.

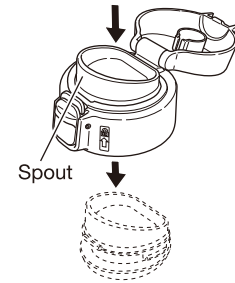
Attaching and removing the lid gasket



Slowly remove the lid gasket while holding and turning it.

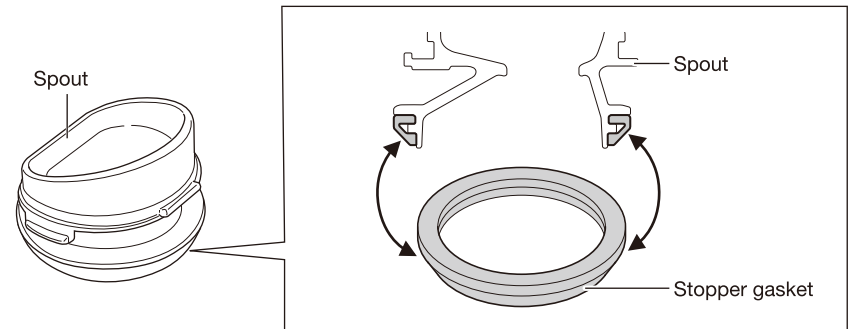
When attaching the lid gasket, make sure to fit it completely in the proper direction.

Attaching and removing the spout



When attaching the spout, make sure to fit it completely. Otherwise, the contents may leak out.

Attaching and removing the stopper gasket



Slowly remove the stopper gasket while holding its edge.

When attaching the stopper gasket, make sure to fit it completely in the proper direction.

Replacing and Purchasing Consumable Parts

The lid unit is a consumable part. Check once a year for damage/deterioration. If heavily stained or loose, replace them. For replacement parts, contact customer service or the shop where you purchased this product.

Before contact customer service

The utmost measures have been taken to ensure the quality of this product. Should the product be defective, however, contact your dealer and provide the following information.

1. Product name
2. Model number
3. Description of trouble (As detailed as possible)
4. Purchase date

Feel free to send any questions or comments about this product to the shop where you purchased it.

※ For the purpose of performance improvement, designs, specifications and parts shown in this publication are subject to change without notice.

Specifications

Capacity	Heat retention	Cold retention
0.36 L / 12.2 oz	Greater than 85°C / 185°F (1 hour)	Less than 9°C / 48°F (6 hours)
	Greater than 63°C / 145°F (6 hours)	
0.48 L / 16.2 oz	Greater than 86°C / 187°F (1 hour)	Less than 8°C / 46°F (6 hours)
	Greater than 68°C / 154°F (6 hours)	
0.6 L / 20.3 oz	Greater than 87°C / 189°F (1 hour)	Less than 7°C / 45°F (6 hours)
	Greater than 72°C / 162°F (6 hours)	

※ Heat retention has been calculated under the condition of adding hot water at 95°C±1°C / 203°F±2°F and leaving it in a room temperature of 20°C±2°C / 68°F±4°F for 6 hours.

※ Cold retention has been calculated under the condition of adding cold water at 4°C±1°C / 39°F±2°F and leaving it in a room temperature of 20°C±2°C / 68°F±4°F for 6 hours.

※ Capacity is actual volume that water can be stored into the product when the lid unit is attached.



TIGER CORPORATION

Head Office: 3-1 Hayami-cho, Kadoma City, Osaka 571-8571, Japan
URL : <http://www.tiger.jp/global.html>

TIGER HANBAI (H.K.) CO.,LTD.

Rm. 1006B, 10/FI., Join-in Hang Sing Centre, 71 - 75 Container Port Road, Kwai Chung, N.T.

Tel: (852) 2418-0912 Fax: (852) 2418-0911

JAPAN TIGER CORPORATION OF U.S.A.

2730 Monterey Street, Suite 105 Torrance, CA 90503

Tel: (310) 787-1985 Fax: (310) 787-1986

EMAIL: info@japantigercorp.com