

Combi oven

Model

Convotherm 4 easyDial

- easyDial
- 6+1 Shelves GN 1/1
- Electric
- Boiler
- Disappearing door



Key features

- ACS+ operating modes: Steam, Combi-steam, Convection
- ACS+ extra functions:
 - Crisp&Tasty – 5 moisture-removal settings
 - BakePro – 5 levels of traditional baking
 - HumidityPro – 5 humidity settings
 - Controllable fan – 5 speed settings
- easyDial: all functions are set in one operating level
- Semi-automatic cleaning system
- HygienicCare
- USB port integrated in the control panel
- TriColor indicator ring – indicates the current operating status
- Steam generated by high-performance boiler outside the cooking chamber
- Disappearing door: more space and greater safety at work (optionally available for an extra charge)

Standard features

- ACS+ (Advanced Closed System +) operating modes:
 - Steam (30-130°C) with guaranteed steam saturation
 - Combi-steam (30-250°C) with automatic humidity adjustment
 - Hot air (30-250°C) with optimized heat transfer
- HygienicCare – food safety thanks to antibacterial surfaces:
 - easyDial control panel
 - Door handle and recoil hand shower
- easyDial user interface:
 - Central control unit, Convotherm-Dial (C-Dial)
 - Digital display
 - Regenerating function – regenerates products to their peak level
 - 99 cooking profiles each containing up to 9 steps
- Multi-point core temperature probe
- Door handle with safety latch and slam function
- Data storage for HACCP and pasteurization figures
- Preheat and cool down function

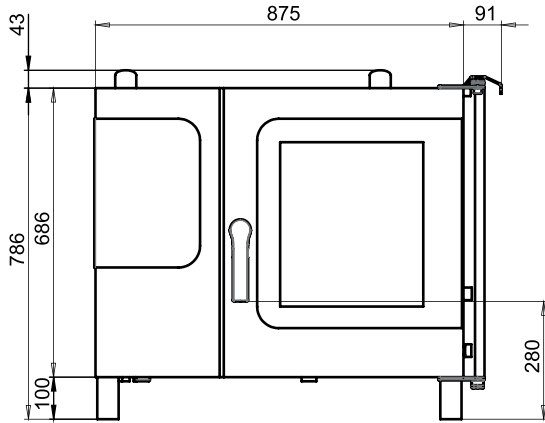
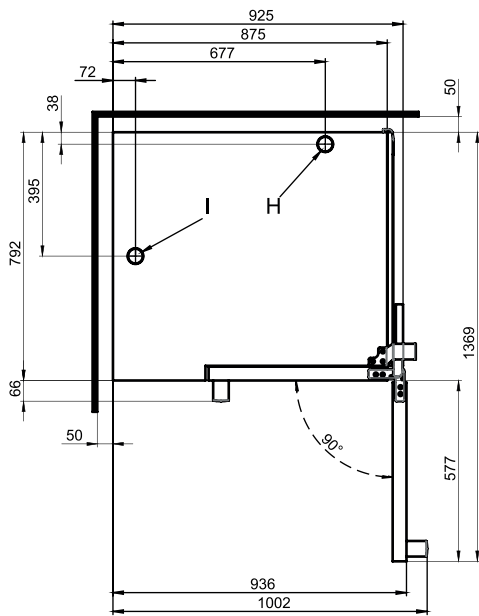
Options

- ConvoClean fully automatic cleaning system – including optional single-measure dispensing
- Steam and vapour removal – built-in condensation module (on request)
- Marine version (see separate datasheet)
- Prison version
- Ethernet interface (LAN)
- Available in various voltages
- Sous-vide probe, external connection
- Core temperature probe, external connection

Accessories

- ConvoLink – HACCP and cooking profile management PC software
- ConvoVent 4 condensation hood with grease filter
- ConvoVent 4+ condensation hood with grease and odour filter
- Signal tower – external operating-state indicator
- Banquet system (optionally as a package or individually): Plate rack, mobile shelf rack, transport trolley, thermal cover
- Equipment stands in various sizes and designs
- Racks, choice of GN or BM versions (BM = standard baking sheet size)
- Stacking kits
- Care products for the ConvoClean fully automatic cleaning system (multiple and single-measure dispensing) and for semi-automatic oven cleaning

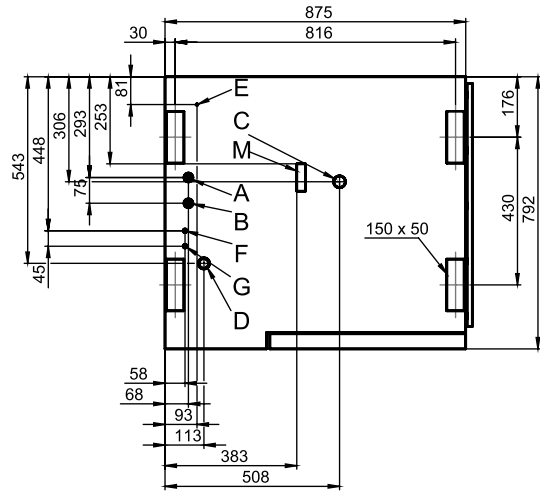


Front view

View from above with wall clearances


Installation instructions

| | |
|-------------------------------------|----------------|
| Absolute tilt of unit in operation* | max. 2° (3.5%) |
|-------------------------------------|----------------|

* Adjustable feet included as standard.

Connection points


- A Water connection (for boiler)
- B Water connection (for cleaning, recoil hand shower)
- C Drain connection DN 50
- D Electrical connection
- E Equipotential bonding
- F Rinse-aid connection
- G Cleaning-agent connection
- H Air vent Ø 50 mm
- I Ventilation port Ø 50 mm
- M Safety overflow 80 mm x 25 mm

Dimensions and weights

| | |
|---|----------------------|
| Dimensions including packaging | |
| Width x Height x Depth | 1100 x 1010 x 940 mm |
| Weight | |
| Empty weight without options* / accessories | 123 kg |
| Weight of packaging | 25 kg |
| Safety clearances** | |
| Rear | 50 mm |
| Right-hand side (disappearing door pushed back) | 130 mm |
| Left (larger gap recommended for servicing) | 50 mm |
| Top*** | 500 mm |

* Weight of options 15 kg max.

** Minimum distance from heat sources: 500 mm.

*** Depends on type of air ventilation system and nature of ceiling.

Loading capacity

| | |
|--|-------|
| Max. number of food containers | |
| GN 1/1* | 6+1 |
| 600 x 400** baking tray | 5 |
| Plates max. Ø 32 cm, Ring spacing 66 mm** | 20 |
| Plates max. Ø 32 cm, Ring spacing 79 mm** | 15 |
| Maximum loading weight | |
| GN 1/1 / 600 x 400 | |
| Per combi oven | 30 kg |
| Per shelf level | 15 kg |

* Matching rack included as standard.

** Matching rack available as an accessory.

Electrical supply

| | |
|--|---|
| 3N~ 400V 50/60Hz* | |
| Rated power consumption | 11.0 kW |
| Rated current | 15.9 A |
| Fuse rating | 16A |
| RCD (GFCI), frequency converter (single phase) | Type A (recommended), type B/F (optional) |
| Recommended conductor cross-section | 5G4 |
| 3~ 230V 50/60Hz* | |
| Rated power consumption | 10.9 kW |
| Rated current | 27.4 A |
| Fuse rating | 35 A |
| RCD (GFCI), frequency converter (single phase) | Type A (recommended), type B/F (optional) |
| Recommended conductor cross-section | 4G6 |
| 3~ 200V 50/60Hz* | |
| Rated power consumption | 10.9 kW |
| Rated current | 31.5 A |
| Fuse rating | 35 A |
| RCD (GFCI), frequency converter (single phase) | Type A (recommended), type B/F (optional) |
| Recommended conductor cross-section | 4G6 |
| 3~ 400V 50/60Hz* | |
| Rated power consumption | 11.0 kW |
| Rated current | 15.9 A |
| Fuse rating | 16 A |
| RCD (GFCI), three-phase frequency converter | Type B/F (recommended) |
| Recommended conductor cross-section | 5G4 |

* Connection to energy optimization system included as standard.

Water connection

| | |
|----------------------------|--|
| Water supply | |
| Water supply | 2 x G 3/4" fixed connection, optionally including connecting pipe (min. DN13 / 1/2") |
| Flow pressure | 150 - 600 kPa (1.5 - 6 bar) |
| Appliance drain | |
| Drain version | Fixed connection (recommended) or funnel waste trap |
| Type | DN50 (min. internal Ø: 46 mm) |
| Slope for waste-water pipe | min. 3.5% (2°) |

Water quality

| | |
|---|---|
| Water-supply connection A* for boiler, Water-supply connection B* for cleaning, recoil hand shower | |
| General requirements | Drinking water, typically hard water |
| General hardness | 4 - 20 °dh / 70 - 360 ppm / 7 - 35 °TH / 5 - 25 °e |
| pH value | 6.5 - 8.5 |
| Cl ⁻ (chloride) | max. 60 mg/l |
| Cl ₂ (free chlorine) | max. 0.2 mg/l |
| SO ₄ ²⁻ (sulphate) | max. 150 mg/l |
| Fe (iron) | max. 0.1 mg/l |
| Temperature | max. 40 °C |
| Electrical conductivity | min. 20 µS/cm |

* See diagram of connection points, page 2.

Water consumption

| | |
|-------------------------------|----------|
| Water-supply connections A, B | |
| Ø Consumption for cooking** | 3.0 l/h |
| Max. water flow rate | 15 l/min |

** Including water used for cooling the wastewater.

PLEASE NOTE: See diagram of connection points, page 2.

Emissions

| | |
|-------------------------|---------------------|
| Dissipated heat | |
| Latent heat | 2100 kJ/h / 0.58 kW |
| Sensible heat | 2500 kJ/h / 0.69 kW |
| Waste water temperature | max. 80 °C |
| Noise during operation | max. 70 dBA |

ACCESSORIES

(Please refer to the Accessories brochure for detailed information)

Stacking kit

| | |
|------------------------|-------------------------------|
| Permitted combinations | 6.10 on 6.10 6.10 on 10.10 |
|------------------------|-------------------------------|

For a combination of two electric appliances

Select "Stacking kit for Convotherm 4 electric appliances"

For a combination of one electric appliance and one gas appliance in the stacking kit

Select "Stacking kit for Convotherm 4 electric appliances" if:

| | |
|-------------------|-------|
| Bottom combi oven | EB/ES |
| Top combi oven | GB/GS |

Select "Stacking kit for Convotherm 4 gas appliances" if:

| | |
|-------------------|-------|
| Bottom combi oven | GB/GS |
| Top combi oven | EB/ES |

Condensation hood ConvoVent 4*

| | |
|--------------------------------|----------------------|
| Electrical supply | |
| Rated voltage | 1N~ 200-240V 50/60Hz |
| Rated power consumption | 260 W |
| Rated current | 1.9 A |
| Fuse rating | 2.5 A |
| Dimensions excluding packaging | |
| Width x Height x Depth | 877 x 240 x 1085 mm |
| Weight excluding packaging | 66 kg |
| Safety clearance above** | 500 mm |

* Condensation hoods specially designed for stacking kits are available.

** Depends on type of air ventilation system and nature of ceiling.

Condensation hood ConvoVent 4+*

| | |
|--------------------------------|----------------------|
| Electrical supply | |
| Rated voltage | 1N~ 200-240V 50/60Hz |
| Rated power consumption | 260 W |
| Rated current | 1.9 A |
| Fuse rating | 2.5 A |
| Dimensions excluding packaging | |
| Width x Height x Depth | 877 x 373 x 1085 mm |
| Weight excluding packaging | 85 kg |
| Safety clearance above** | 500 mm |

* Condensation hoods specially designed for stacking kits are available.

** Depends on type of air ventilation system and nature of ceiling.

Please observe the following points:

- This document is to be used solely for planning purposes.
- Please refer to the Installation manual for further technical data and guidance on installation and positioning.