

DSK-LX 600

FULLY AUTOMATIC TABLE-TOP MACHINE



DSK-LX 700

FULLY AUTOMATIC TABLE-TOP MACHINE



LCD Display



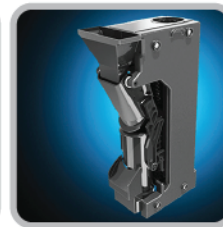
Menu Buttons



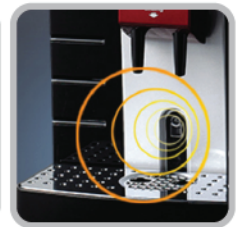
Cup Sensor



Dispense Nozzle



Brewer



Cup Sensor

Model	DSK-LX 600	DSK-LX 700
Product Dimension	320(W) x 615(H) x 521(D) mm	320(W) x 615(H) x 476(D) mm
Weight	26kg	27kg
Electricity	Available for each country's option (Volt /Hz) Power consumption: 1400w	Available for each country's option (Volt /Hz) Power consumption: 1400w
Cup	Cup sensor operating	Cup sensor operating
Water Supply	Pumping from water bottle (Option: Direct connection from water purifier)	Pumping from water bottle (Option : Direct connection From water purifier)
Type	Brewer Mechanism	Brewer Mechanism
Menu Button	Americano, Café Latte, Cappuccino, Espresso, Chocomilk, Café Mocha, Hot Choco, Hot Water	Americano, Soft Americano, Espresso, Café latte, Cappuccino, Hot Water
Canister	Bean hopper (1.2kg) / Powder (1kg)	Bean hopper (1.2kg) / Powder (1kg)
Features	<ul style="list-style-type: none"> - Cup recognition sensor - LED back lighting - High strength ceramic grinder - Full - automatic brewer - High - efficiency mixing system 	<ul style="list-style-type: none"> - Slim design - 2 in 1 system - Low speed/high efficiency grinder - Advanced spindle rotary type of top quality brewer mechanism - By-pass function